

Silhouette Studio Library File Extractor Free User Guide

Version: Free V1.1.15

Issue Date: 17 March 2018

Author: © Ian Wadsworth 2014 - 2018

Table of Contents

1. DOCUMENT DETAILS	7
1.1 Summary	8
1.2 Supersedes	8
1.3 Version History	8
1.4 Copyright.....	8
2. RELEASE AND SYSTEM REQUIREMENTS INFORMATION	9
2.1.1 Disclaimer.....	10
2.1.2 Copyright of the Extracted Files.....	10
2.2 Software Use.....	10
2.3 Copyright Acknowledgements	10
2.4 End User Licence.....	10
2.5 Release Notes.....	10
2.5.1 Changes Made in Version 1.1.15	10
2.5.1.1 New Features	10
2.5.1.2 Issues Fixed	10
2.5.1.3 Improved.....	11
2.6 Reporting Issues (Bugs)	11
2.7 System Requirements.....	11
3. THE APPLICATION	12
3.1 Background Information	13
3.1.1 The Silhouette Studio Cloud Update.....	13
3.2 Main Features	13
3.3 Running the Application	13
3.3.1 Not Read in Or Missing Library Entries	15
3.3.2 Other Errors	18
4. MENU.....	20
4.1 File Menu.....	21
4.1.1 Exit	21
4.2 Help Menu.....	21
4.2.1 User Guide.....	21
4.2.2 Installation Folder.....	21
4.2.3 Silhouette Studio Library Folder	22
4.2.4 Check for Updates	22

4.2.4.1 Download the New Version	23
4.2.4.2 Installing the Update.....	24
4.2.4.3 Other Error Messages	24
4.2.5 About	25
5. EXTRACTING THE LIBRARY FILES	26
5.1 Selecting the Library Entries to be extracted	27
5.2 Folder Mapping and Renaming	28
5.3 Library Entry details	33
5.4 Set the Destination Folder for the Extracted Files	33
5.5 Extracting the Files.....	34
5.6 Extracted Files Folder	36
5.7 Other Errors	37
5.8 Displaying the Log Messages	37
6. ACKNOWLEDGMENTS	40
6.1 Demo/Free Release Testers	41
7. APPENDIX	42
7.1 Un-Installing	43
7.2 Keyboard Shortcuts.....	44
7.3 Previous Release Notes.....	44
7.3.1 Changes Made in Version 1.1.00	44
7.3.1.1 New Features	44
7.3.1.2 Issues Fixed	44
7.3.1.3 Improved.....	44
7.3.2 Changes Made in Version 1.0.35	44
7.3.2.1 New Features	44
7.3.2.2 Issues Fixed	44
7.3.3 Changes Made in Version 1.0.31	44
7.3.3.1 Issues Fixed	44
7.3.4 Changes Made in Version 1.0.30	45
7.3.4.1 Issues Fixed	45
7.3.4.2 Improvements Made	45
7.3.5 Changes Made in Version 1.0.20	45
7.3.5.1 New Features	45
7.3.5.2 Issues Fixed	45
7.3.5.3 Improvements Made	45
7.3.6 Changes Made in Version 1.0.00	45
7.3.6.1 New Features	45
7.3.6.2 Updated.....	46
7.3.6.3 Improvements Made	46

Silhouette Studio Library File Extractor Free V1.1.15 User Guide

7.3.7 Changes Made in Version 0.5.06	46
7.3.7.1 New Features	46
7.3.7.2 Improvements Made	46
7.3.8 Known Issues.....	46
7.3.9 Changes Made in Version 0.5.05	46
7.3.9.1 New Features	46
7.3.10 Changes Made in Version 0.5.04	46
7.3.10.1 Issues Fixed	46

Table of Pictures

PICTURE 1 PROGRESS BAR DURING THE READING OF THE LIBRARY ENTRIES.....	14
PICTURE 2 SCREEN SHOT OF THE SILHOUETTE STUDIO LIBRARY FILE CONVERTER FREE (NON CLOUD VERSION).....	14
PICTURE 3 SCREEN SHOT OF THE SILHOUETTE STUDIO LIBRARY FILE CONVERTER FREE (CLOUD VERSION)	15
PICTURE 4 NO STUDIO LIBRARY FOLDER FOUND	15
PICTURE 5 NO INDEX FILE OF LIBRARY ENTRIES FOUND	15
PICTURE 6 NOT READ IN OR MISSING LIBRARY ENTRIES	16
PICTURE 7 RE-INDEX LIBRARY OPTION IN SILHOUETTE STUDIO V3	17
PICTURE 8 MY LIBRARY SHOWING THE FOLDERS AND TOTALS (NON CLOUD VERSION)	18
PICTURE 9 A NON CLOUD LIBRARY INDEX FILE HAS BEEN FOUND	18
PICTURE 10 INSTALLATION FOLDER.....	22
PICTURE 11 SILHOUETTE STUDIO LIBRARY FOLDER	22
PICTURE 12 THE CURRENT VERSION IS UP TO DATE	23
PICTURE 13 THERE IS A NEW VERSION AVAILABLE.....	23
PICTURE 14 NETWORK CONNECTION PROBLEM.....	23
PICTURE 15 UPDATE SERVER PROBLEM	23
PICTURE 16 SELECT THE LOCATION TO SAVE THE SET UP FILE	24
PICTURE 17 THE FILE HAS DOWNLOADED	24
PICTURE 18 THE ‘ABOUT’ FORM FOR A FREE VERSION	25
PICTURE 19 ALL THE LIBRARY ENTRIES SELECTED (NON CLOUD VERSION)	27
PICTURE 20 SOME OF THE LIBRARY ENTRIES SELECTED (NON CLOUD VERSION).....	28
PICTURE 21 MY LIBRARY IN SILHOUETTE STUDIO (NON CLOUD VERSION).....	29
PICTURE 22 THE LIBRARY ENTRIES FOLDERS IN SILHOUETTE STUDIO LIBRARY FILE EXTRACTOR (NON CLOUD VERSION).....	29
PICTURE 23 MY LIBRARY IN SILHOUETTE STUDIO (CLOUD VERSION)	31
PICTURE 24 THE LIBRARY ENTRIES FOLDERS IN SILHOUETTE STUDIO LIBRARY FILE EXTRACTOR (CLOUD VERSION)	32
PICTURE 25 LIBRARY ENTRY DETAILS FOR A SELECTED ENTRY	33
PICTURE 26 THE DESTINATION FOLDER GROUP BOX	33
PICTURE 27 SELECTING THE DESTINATION FOLDER.....	34
PICTURE 28 THE DESTINATION FOLDER HAS BEEN SELECTED.....	34
PICTURE 29 NOT ENOUGH DISK SPACE.....	34
PICTURE 30 FILES EXIST ON DESTINATION DRIVE/FOLDER	35
PICTURE 31 PROGRESS BAR.....	35
PICTURE 32 FINISHED EXTRACTING THE ENTRIES	35
PICTURE 33 THE EXTRACTED LIBRARY ENTRIES UN-CHECKED AND ENTRY NAME IN GREEN (NON CLOUD VERSION).....	36
PICTURE 34 THE EXTRACTED FILES IN THE DESTINATION FOLDER.....	36
PICTURE 35 SELECTING THE ERROR AND WARNING OR LIBRARY ENTRIES PROCESSED	37
PICTURE 36 THE ERRORS AND WARNING MESSAGES	37
PICTURE 37 THE LIBRARY ENTRIES PROCESSED.....	38
PICTURE 38 UN-INSTALLING FROM THE START MENU	43
PICTURE 39 CONFIRM UNINSTALL.....	43
PICTURE 40 SUCCESSFULLY UNINSTALLED	43

List of Tables

TABLE 1 MAPPING OF SILHOUETTE STUDIO LIBRARY TO THE EXTRACTED DESTINATION FOLDER (NON CLOUD VERSION)	30
--	----

TABLE 2 MAPPING OF SILHOUETTE STUDIO LIBRARY TO THE EXTRACTED DESTINATION
FOLDER (CLOUD VERSION)..... 32

1. Document Details

1.1 Summary

This is the release for the Silhouette Studio Library Converter Free release V1.1.15.

1.2 Supersedes

None.

1.3 Version History

Version	Date	Details
0.00	31 December 2014	Authors & Contributors at this version Ian Wadsworth. First issue.

1.4 Copyright

This document, test files, executables and related files are copyright of Ian Wadsworth (except where indicated), and must not be distributed to any un-authorized testers without the consent of Ian Wadsworth.

2. Release and System Requirements Information

2.1.1 Disclaimer

There is no association between the Intellectual Property owner of this application and Silhouette America. This is NOT Silhouette America approved. In other words, they don't own or control it.

2.1.2 Copyright of the Extracted Files

This creates a copy of the Silhouette Studio library files/images. This does not change the copyright or licence terms of any of the extracted files. These still belong to the author/owner of the original files/images, which will also apply to the extracted files/images.

2.2 Software Use

- The software is supplied as is. It may contain defects, and may not be fit for purpose.
- The author cannot be held responsible for any loss of data caused by using the application.
- It has been checked for viruses, but it is up to the user to check that their system have the latest anti-virus software installed and enabled.

2.3 Copyright Acknowledgements

All registered trademarks are recognised, and are not used to exclusively promote the application.

2.4 End User Licence

Please read the document 'eula.rtf'.

- The software is licensed, and is not owned.
- No selling or renting of the executable file
- Internationally copyright protected.
- It may not be re-sold, rented, etc.
- Please don't distribute the executable file, link it to this website

2.5 Release Notes

The latest release/update is also available from the Ideas R Us Software website (<http://www.ideas-r-us-software.uk/>), from the Downloads web page.

A help forum is at <http://www.ideas-r-us.co.uk/forum/>

2.5.1 Changes Made in Version 1.1.15

2.5.1.1 New Features

- Cloud library entry extraction has now been fully implemented.
- A menu item in the help menu to the location of the Silhouette Studio Library files.
- The file extension of the library entry name has been added in the Library Entries Details group box.
- The progress bar is updated when the Cloud Library Entries are being read in.
- New category descriptions for 'Printable Pattern' and 'eBook' category types.

2.5.1.2 Issues Fixed

- All the files in the folders of the destination folder were being searched to see if the folder was empty, and was taking too long. Fixed.

- A JPEG file type was not detected. Fixed.
- Some of the preview thumbnails in the Studio Library Entry are 300 x 300 pixels, whilst others are 100 x 100 pixels. The picture thumbnail preview box did not show the image at the correct size. Fixed.
- Some Cloud Library Entry names in the tree-view list had a file extension. Removed the file extension from the Cloud Library Entry name. Fixed.

2.5.1.3 Improved

- Removed the comma at the end of the keywords list for Non-cloud Library Entries.
- Added a space between the commas for Cloud Library Entry keywords.
- The time taken to un-check all the extracted library entries in the tree-view list.

2.6 Reporting Issues (Bugs)

Issues can be reported by going to the forum at <http://www.ideas-r-us.co.uk/forum/>.

2.7 System Requirements

- Requires Windows XP, Windows Vista, Windows 7, Windows 8.x or Windows 10.
- At least 3MB of hard disk space
- The application uses about 25MB of DRAM.
- Requires the Microsoft .NET Framework 3.5 Service Pack 1 (Requires at least Service Pack 2 Win XP), if not already installed. The installer will detect if the framework is installed or not.
 - If you have Internet access it can be downloaded from <http://www.microsoft.com/en-gb/download/details.aspx?id=25150> (about 235MB)
 - If no Internet access, it may be on the operating systems install disk.

The supplied files are: -

```
SilhouetteStudioLibraryFileExtractor.exe
SilhouetteStudioLibraryFileExtractorUserGuide.pdf
eula.rtf
unins000.dat
unins000.exe
```

3. The Application

3.1 Background Information

The entries in the Silhouette Studio library don't use human readable names; the filenames are converted to numbers. This makes it difficult to see the files.

The library entries in Silhouette Studio library can store any file type supported by Silhouette Studio (e.g., BMP, PNG, GSD, Studio). Each entry in the library consists of a file drawing/image type, a preview thumbnail and some user entered information about the file.

All the files downloaded from the Silhouette Design Store (<http://www.silhouettedesignstore.com/>) are first stored in the Recent Downloads folder, but they can be later moved to any user created folder.

3.1.1 The Silhouette Studio Cloud Update

Starting with Silhouette Studio version 3.7.026 that was released on the 26 April 2016, the Silhouette Studio Library Structure has been changed to allow 'Cloud' storage of some of the library files. All the files will be copied to the `cloud52` folder.

3.2 Main Features

The application will extract the original file type, the preview thumbnail and the library file details for each library entry in the Silhouette Studio library.

A folder/file viewer allows one or more library entries to be selected, and extracted.

The extraction produces 3 types of file: -

1. The original file format that was imported into the library, Bitmap/Raster or Vector file
2. The preview thumbnail as displayed in the Silhouette Studio software, a PNG bitmap
3. The library file details (Artist, Description, Category, Keywords), in a text file

The fonts, patterns, and recycle folder are extracted.

The extracted folder structure of the Silhouette Studio library is maintained.

3.3 Running the Application

Silhouette Studio Library Converter Free can be run with the Silhouette Studio open, but sometimes the library is only updated when Silhouette Studio is closed.

There are three ways that the Silhouette Studio Library Converter Free application can be started: -

1. Clicking on the desktop program icon (if created).
2. From the start menu -> Programs -> Ideas R Us Software -> Silhouette Studio Library File Extractor Free -> Silhouette Studio Library File Extractor Free (if created).
3. By clicking on the `SilhouetteStudioLibraryFileExtractor.exe` in the `SilhouetteStudioLibraryFileExtractorFree` folder (where the application was installed).

While the library entries are being read in, a progress bar will be displayed (see Picture 1 Progress Bar During the Reading of the Library Entries). This may take some time depending on the number of library entries in the Silhouette Studio Library.

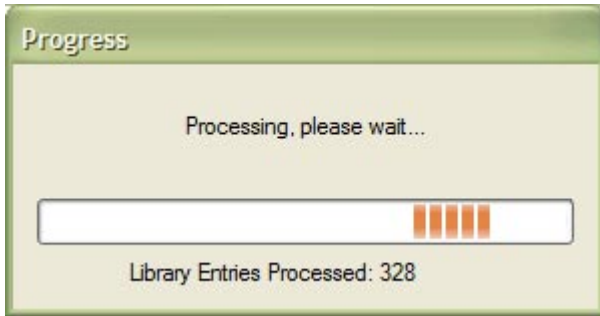
Silhouette Studio Library File Extractor Free V1.1.15 User Guide

The main form will appear (see Picture 2 Screen Shot of the Silhouette Studio Library File Converter Free (Non Cloud Version)), or if the Cloud version of the software is being used (see Picture 3 Screen Shot of the Silhouette Studio Library File Converter Free (Cloud Version)).

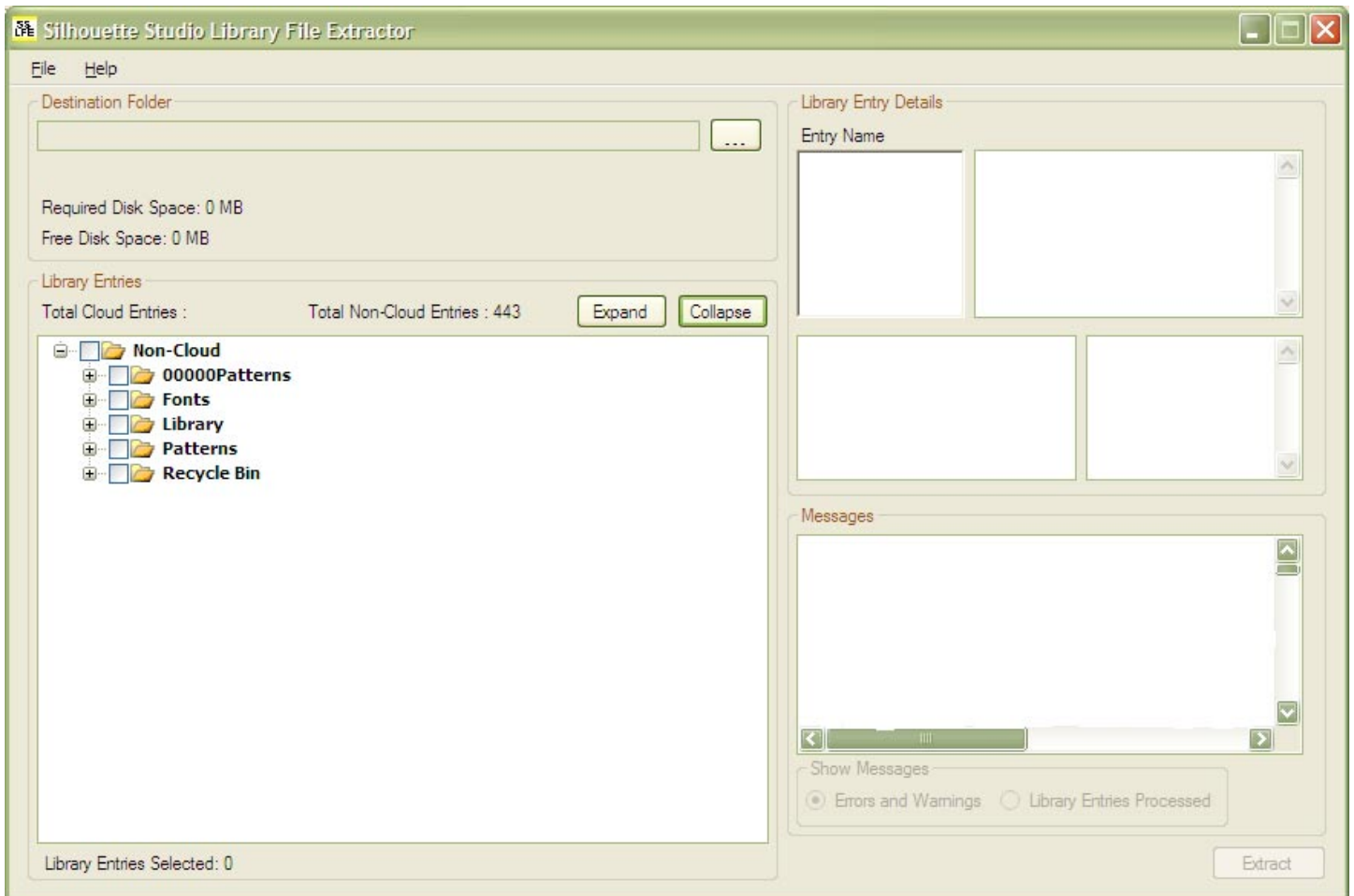
The total number of Cloud or Non Cloud entries will be shown.

If there is no Silhouette Studio library an error message will be displayed (see Picture 4 No Studio Library Folder Found or Picture 5 No Index File of Library Entries Found).

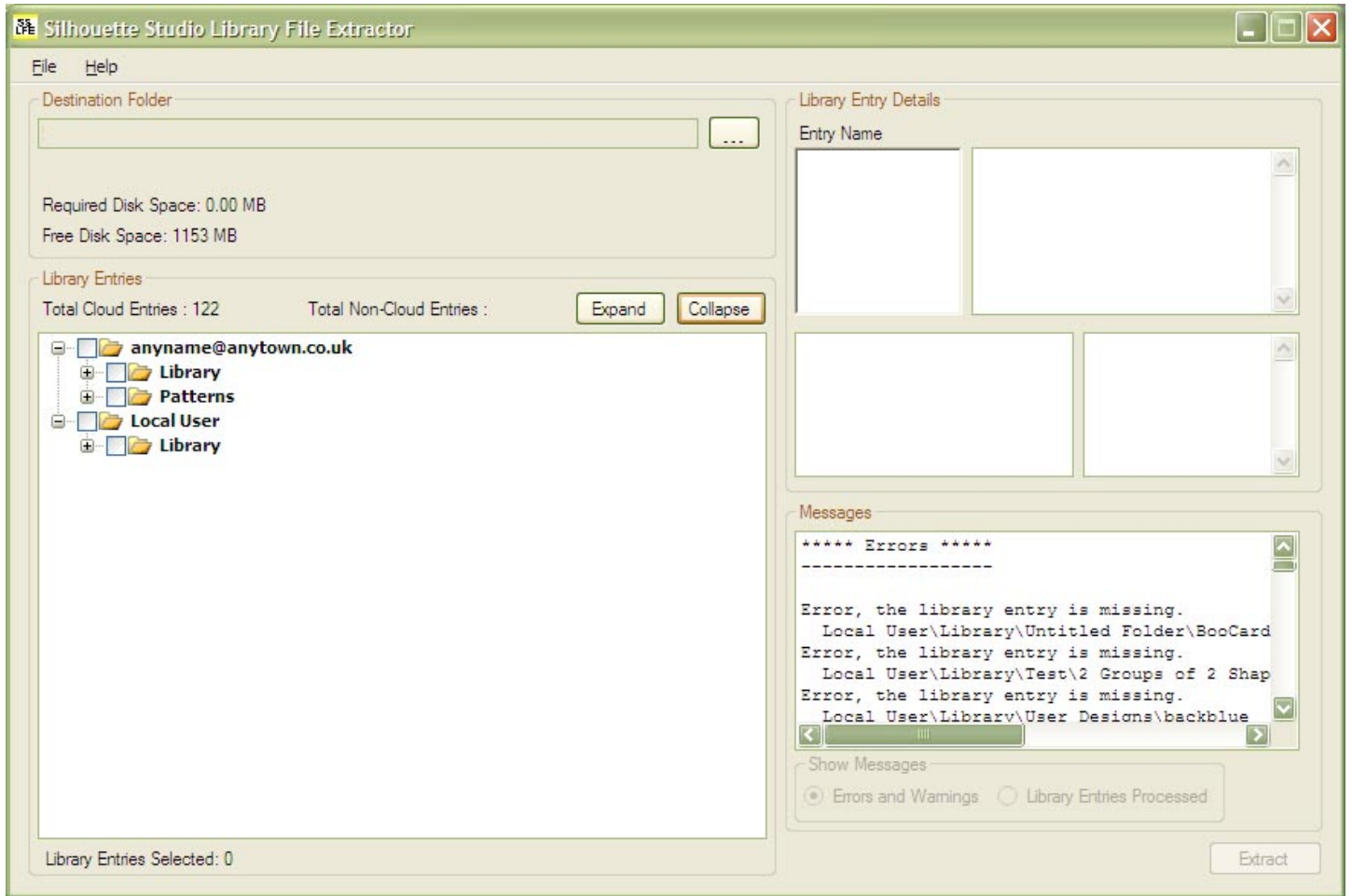
Picture 1 Progress Bar During the Reading of the Library Entries



Picture 2 Screen Shot of the Silhouette Studio Library File Converter Free (Non Cloud Version)



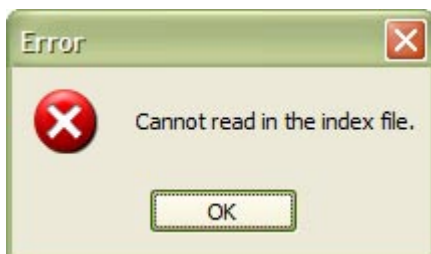
Picture 3 Screen Shot of the Silhouette Studio Library File Converter Free (Cloud Version)



Picture 4 No Studio Library Folder Found



Picture 5 No Index File of Library Entries Found



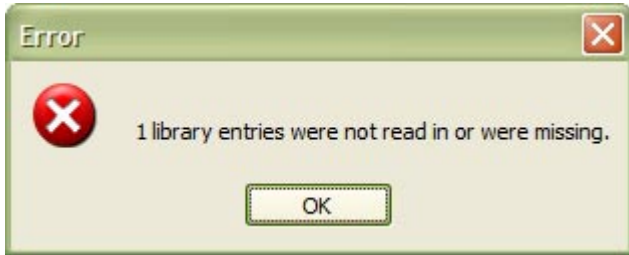
3.3.1 Not Read in Or Missing Library Entries

If the Silhouette Studio Library Index File has missing entries in it, or the library entry file itself may have been deleted or is corrupt, an error message will be displayed (see Picture 6 Not Read in or Missing Library Entries).

Silhouette Studio Library File Extractor Free V1.1.15 User Guide

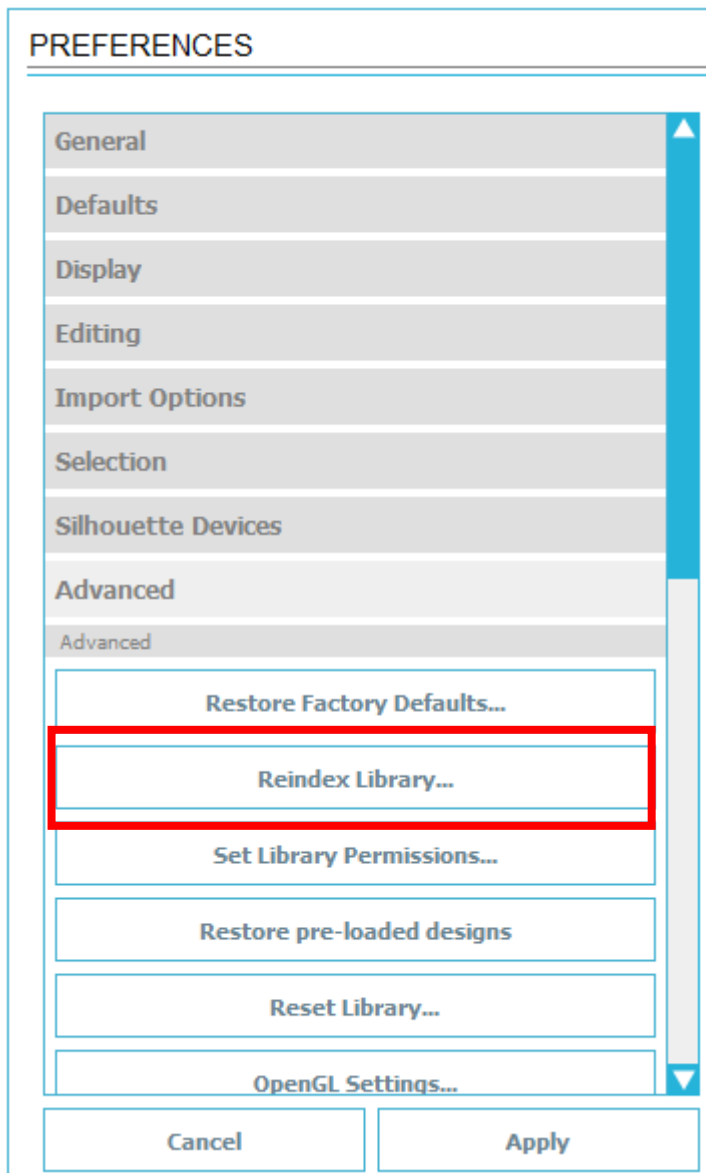
The library index may need re-indexing, especially after a library entry has been deleted from the library (it will be placed in the Recycle Bin).

Picture 6 Not Read in or Missing Library Entries

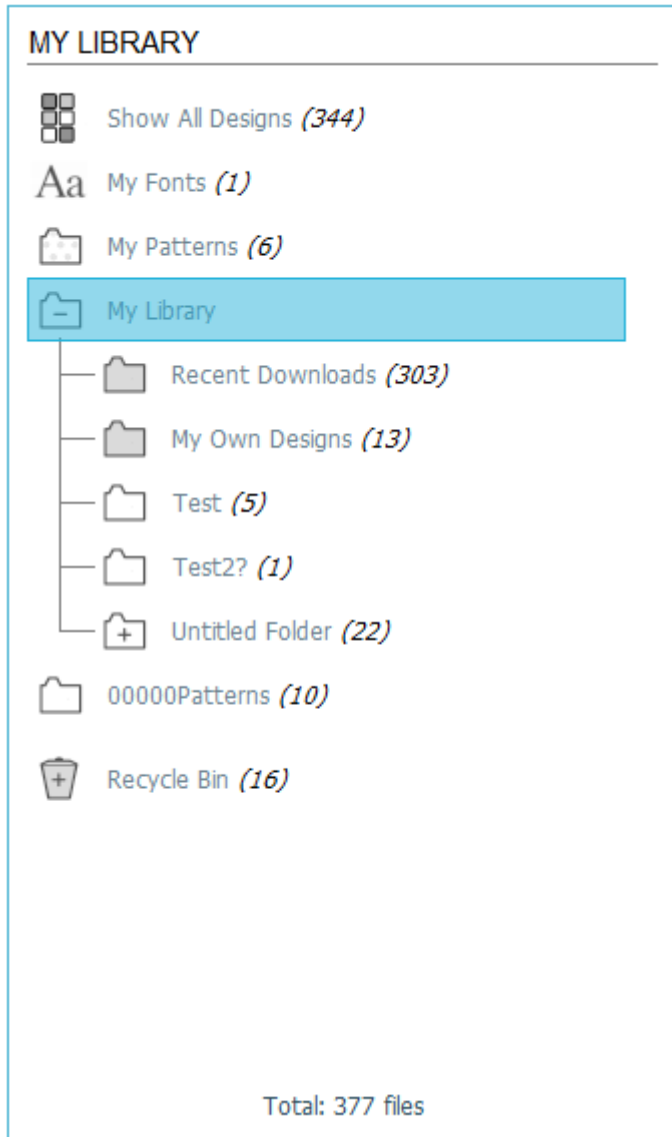


- To re-index the Silhouette Studio library, exit the Silhouette Studio Library File Extractor, and start Silhouette Studio.
- From the menu, select Edit -> Preferences..., then click the Reindex Library... button (see Picture 7 Re-index Library Option in Silhouette Studio V3).
- Start the Silhouette Studio Library File Extractor, the Library Files count and the folders should now be the same as in My Library (see Picture 8 My Library Showing the Folders and Totals (Non Cloud Version))

Picture 7 Re-index Library Option in Silhouette Studio V3



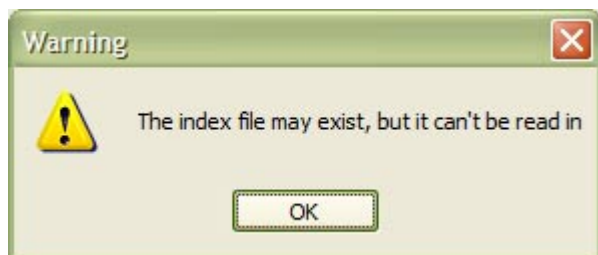
Picture 8 My Library Showing the Folders and Totals (Non Cloud Version)



There may be an old index file for the original non-cloud version, but with no Library Entries in it (see Picture 9 A Non Cloud Library Index file has been found).

There may be other old non-cloud unused files, that will show a warning.

Picture 9 A Non Cloud Library Index file has been found



3.3.2 Other Errors

- Cannot read in a cloud library index file.
- Cannot read in the patches file. The Library Entries may not have the correct name or details.

Silhouette Studio Library File Extractor Free V1.1.15 User Guide

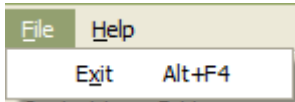
- Cannot read in the renamelist file. The Library Entries may not have the correct name or details.
- Error reading in data from the file.
- Error reading in the file entry in the cloud index file.
- Error reading in the entry in the cloud index file.
- Error setting the position in the file.
- Error unknown entry in the cloud index file.
- The library entry 'xxxxx' has errors.
- The Studio Library version is not supported.
- This is not a Studio Library file.
- There is no drawing/image file to extract.
- Unknown file format.
- Unknown library drawing file format.

4. Menu

File Help

- File Menu
- Help Menu

4.1 File Menu



- Exit

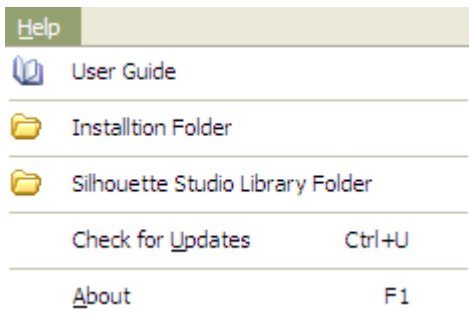
4.1.1 Exit

Menu -> File -> Exit

Alt + F4

Exit or closes the application.

4.2 Help Menu



- User Guide
- Installation Folder
- Silhouette Studio Library Folder
- Check for Updates
- About

4.2.1 User Guide

Menu -> Help -> User Guide

You are reading it! This will open the PDF User Guide. A PDF reader must be installed to view the User Guide; otherwise an error message will be displayed.

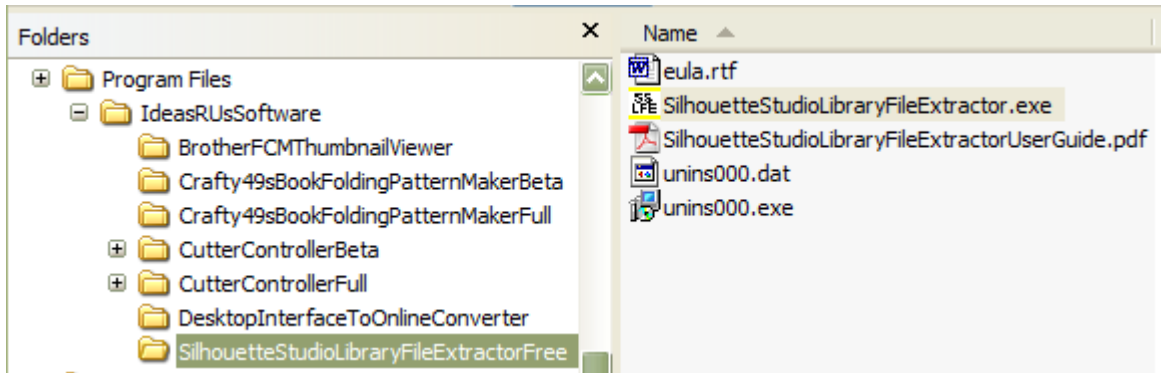
It is located in the Installation Folder, or in the Documents sub-folder (see 4.2.2 Installation Folder).

4.2.2 Installation Folder

Menu -> Help -> Installation Folder

This will open the folder where the 'Silhouette Studio Library File Extractor' is installed. If it cannot, an error message will be displayed.

Picture 10 Installation Folder

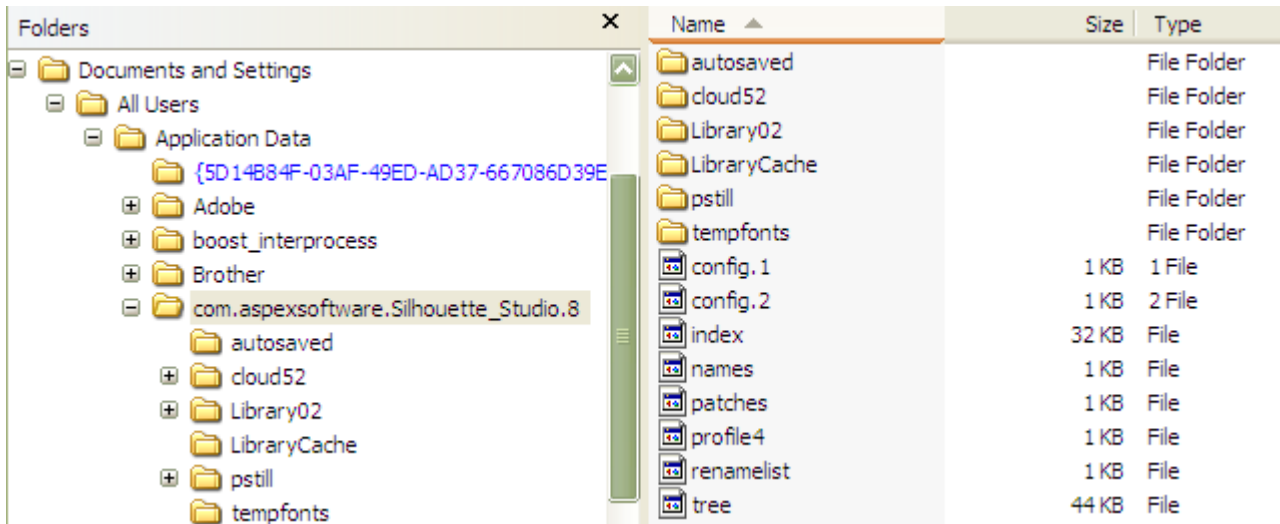


4.2.3 Silhouette Studio Library Folder

Menu -> Help -> Silhouette Studio Library Folder

This will open the folder where the ‘Silhouette Studio Library Folder’ has been created. If it cannot, an error message will be displayed.

Picture 11 Silhouette Studio Library Folder



4.2.4 Check for Updates

Menu -> Help -> Check for Updates

Ctrl + U

Checks if there is an update to the current application.

The latest release/update is also available from the Ideas R Us Software website (<http://www.ideas-r-us-software.uk/>), from the Downloads web page.

If the version is up to date, the message box in Picture 12 The Current Version is up to Date will be displayed.

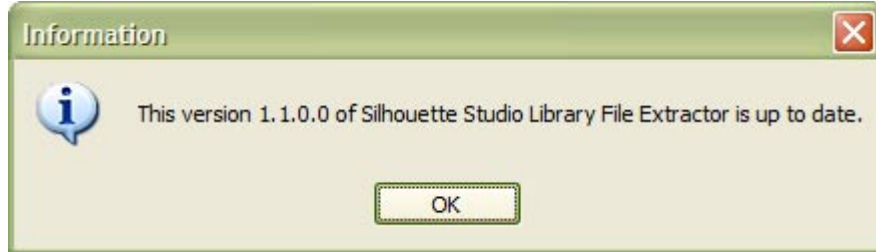
If there is an update available, the message box in Picture 13 There is a New Version Available will be displayed.

Silhouette Studio Library File Extractor Free V1.1.15 User Guide

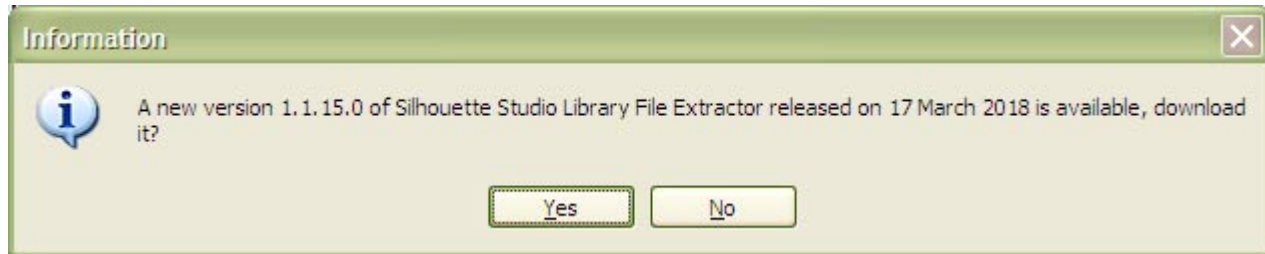
If there is a problem with the network connection or the update server, the message box in Picture 14 Network Connection Problem or Picture 15 Update Server Problem will be displayed.

Note: There may be a delay before a pop-up message box, or an error message appears.

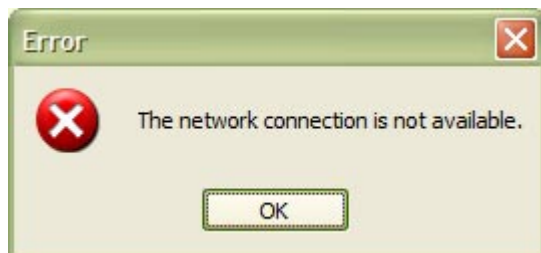
Picture 12 The Current Version is up to Date



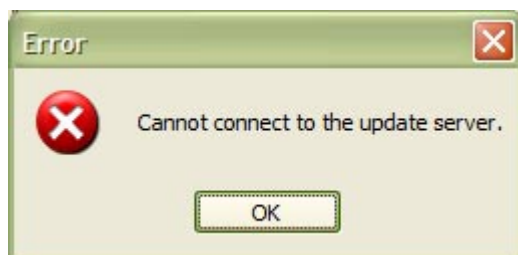
Picture 13 There is a New Version Available



Picture 14 Network Connection Problem



Picture 15 Update Server Problem



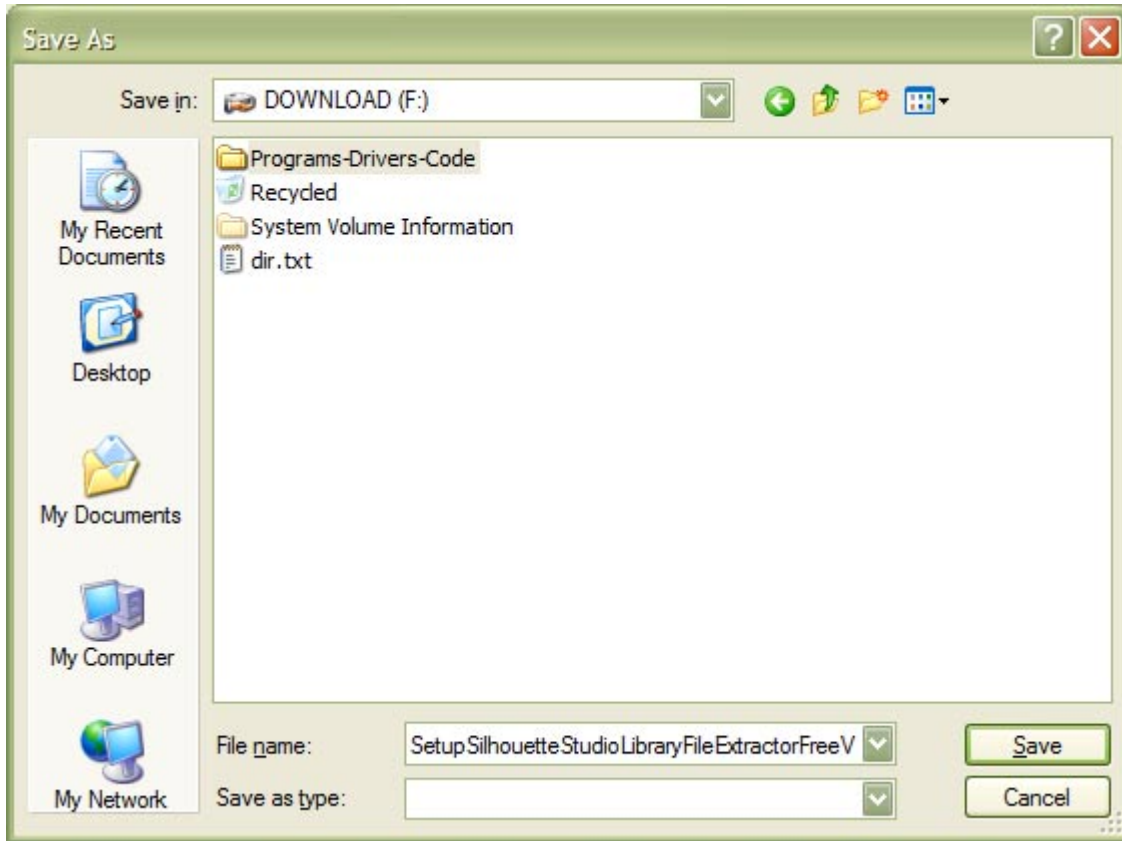
4.2.4.1 Download the New Version

To download the new version, click the 'Yes' button in Picture 13 There is a New Version Available, the 'Save As' dialog box will appear (see Picture 16 Select the Location to Save the Set up File). Clicking the 'No' button will cancel the download.

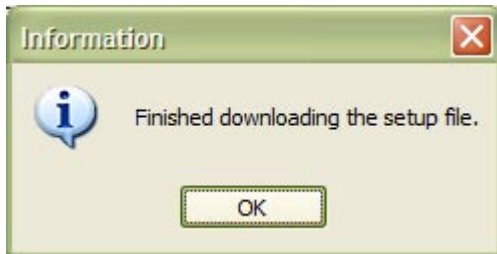
Select the folder where the download file is to be saved (the file name can be renamed if required), then click the 'Save' button. After the file has finished downloading, a message will be displayed. Click the 'OK' button.

Note: There is a short delay while the file is downloading.

Picture 16 Select the Location to Save the Set up File



Picture 17 The File has downloaded



4.2.4.2 Installing the Update

To install the update, the Silhouette Studio Library File Extractor Free application must be closed down.

An installation guide is available if help is needed with the install. See the Downloads web page from the Ideas R Us Software website (<http://www.ideas-r-us-software.uk/>).

4.2.4.3 Other Error Messages

These are system errors.

- The version information on the server is incorrect.
- The version information file on the server is missing.
- The download link on the server is missing.
- The setup file on the server is missing.

Note: Under certain conditions if the server is down or there is no network connection, these can also be displayed.

4.2.5 About

Menu -> Help -> About
F1

Shows the 'Silhouette Studio Library File Extractor Free', which is just version information, and where to report issues with the application.

Picture 18 The 'About' Form for a Free Version



5. Extracting the Library Files

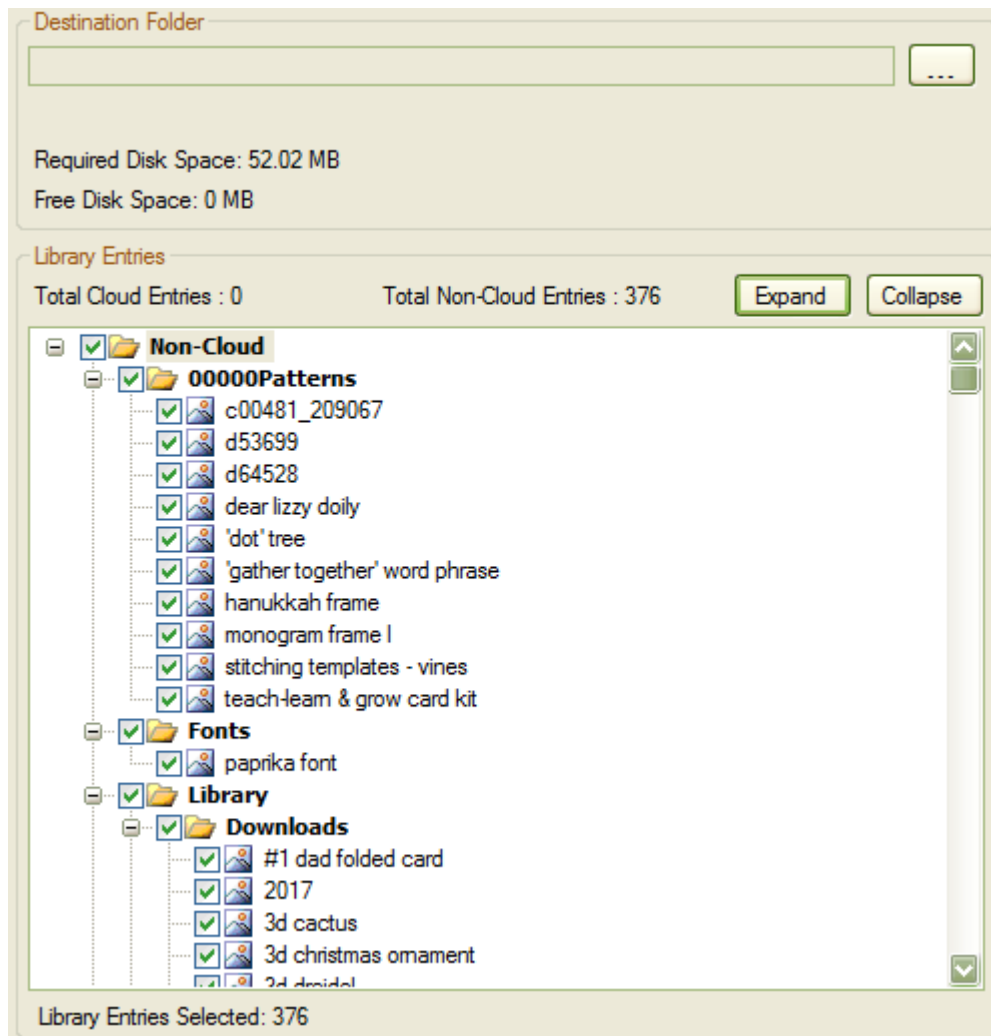
5.1 Selecting the Library Entries to be extracted

All of the Library Entries to be extracted can be selected (see Picture 19 All the Library Entries Selected), or just a few (see Picture 20 Some of the Library Entries Selected).

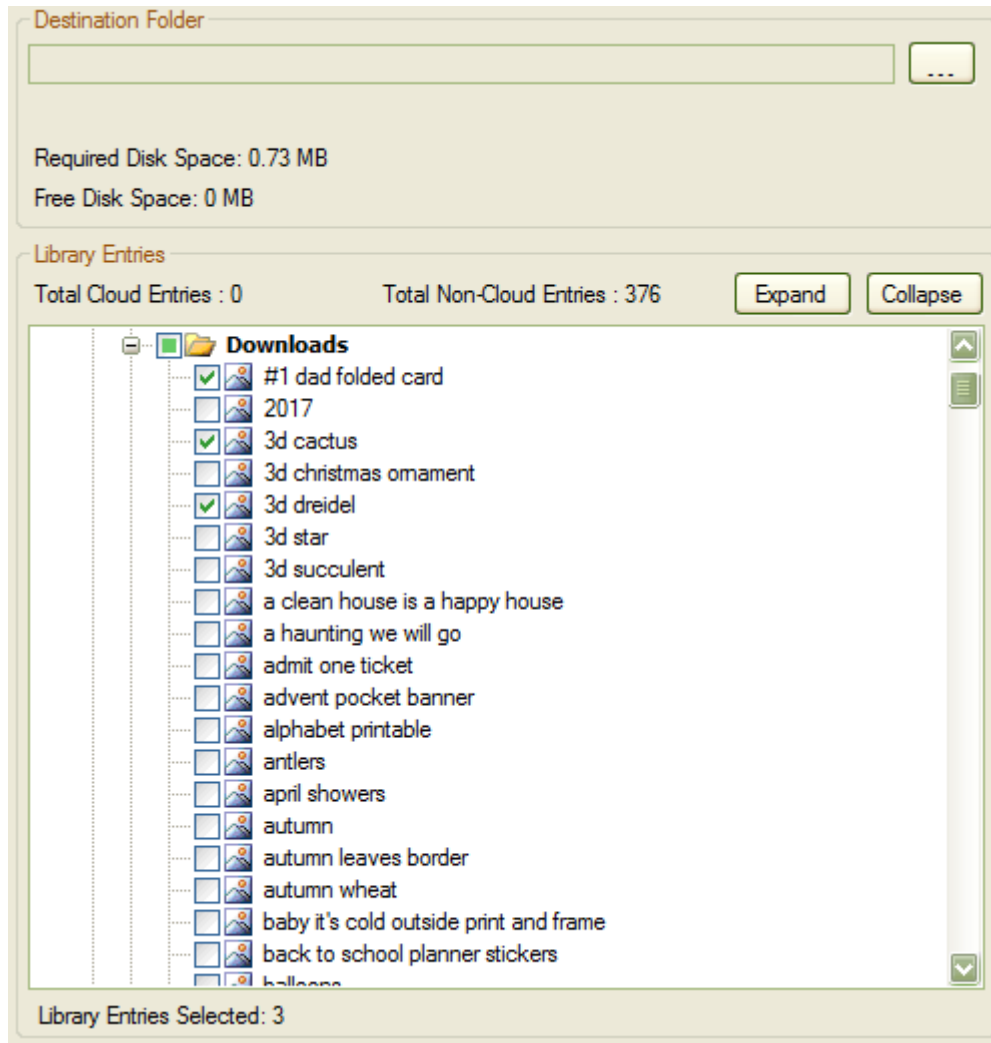
To select (or un-select) a single library entry, click on the check box next to the library entry name. To select all the library entries in a folder, click on the check box by the folder name. The number of selected library entries will be shown.

The 'Expand' button will expand all the tree nodes, whilst the 'Collapse' button, will collapse all the tree nodes.

Picture 19 All the Library Entries Selected (Non Cloud Version)



Picture 20 Some of the Library Entries Selected (Non Cloud Version)

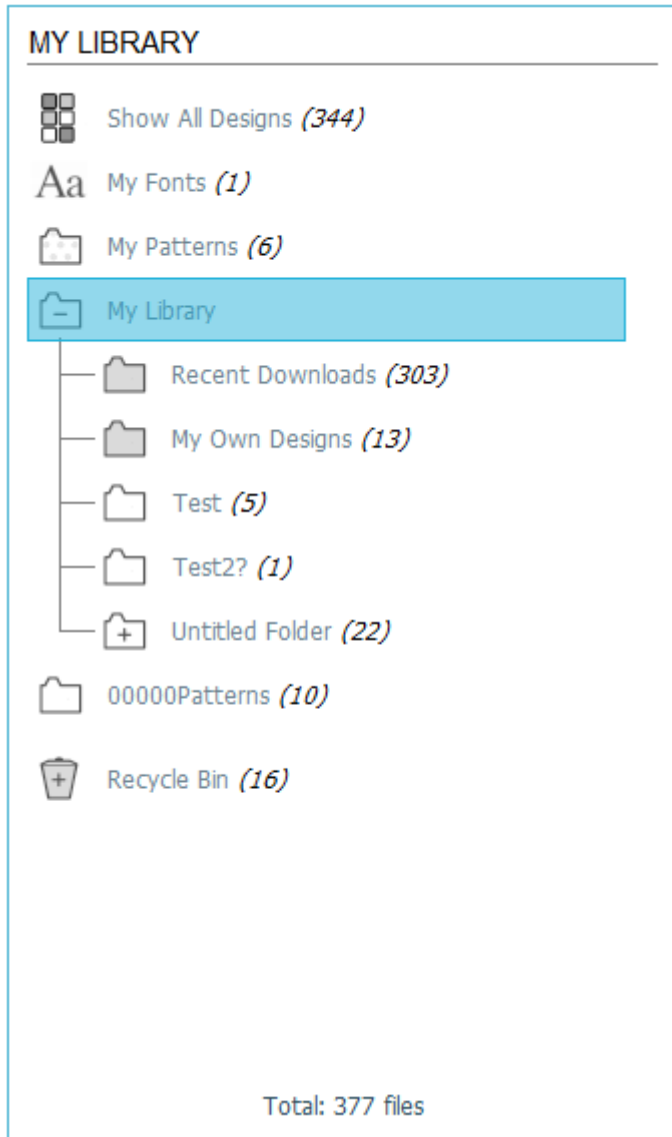


5.2 Folder Mapping and Renaming

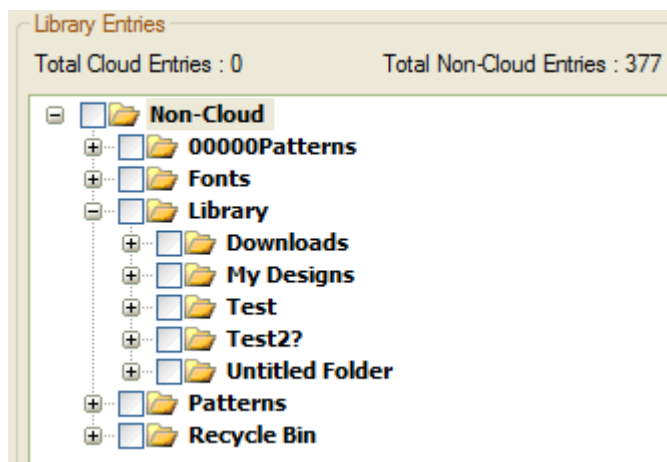
The naming of the some of the folders is different to that in the Silhouette Studio Library, as well as the sort order. See Picture 21 My Library in Silhouette Studio (Non Cloud Version) and Picture 22 The Library Entries Folders in Silhouette Studio Library File Extractor (Non Cloud Version).

Folders that do not contain any library entries are not shown in the Silhouette Library File Extractor, but will be shown in the My Library in Silhouette Studio.

Picture 21 My Library in Silhouette Studio (Non Cloud Version)



Picture 22 The Library Entries Folders in Silhouette Studio Library File Extractor (Non Cloud Version)



The Mapping of Silhouette Studio Library to converted/extracted folders is shown in the tables below; see Table 1 Mapping of Silhouette Studio Library to the Extracted Destination Folder (Non Cloud Version).

Silhouette Studio Library File Extractor Free V1.1.15 User Guide

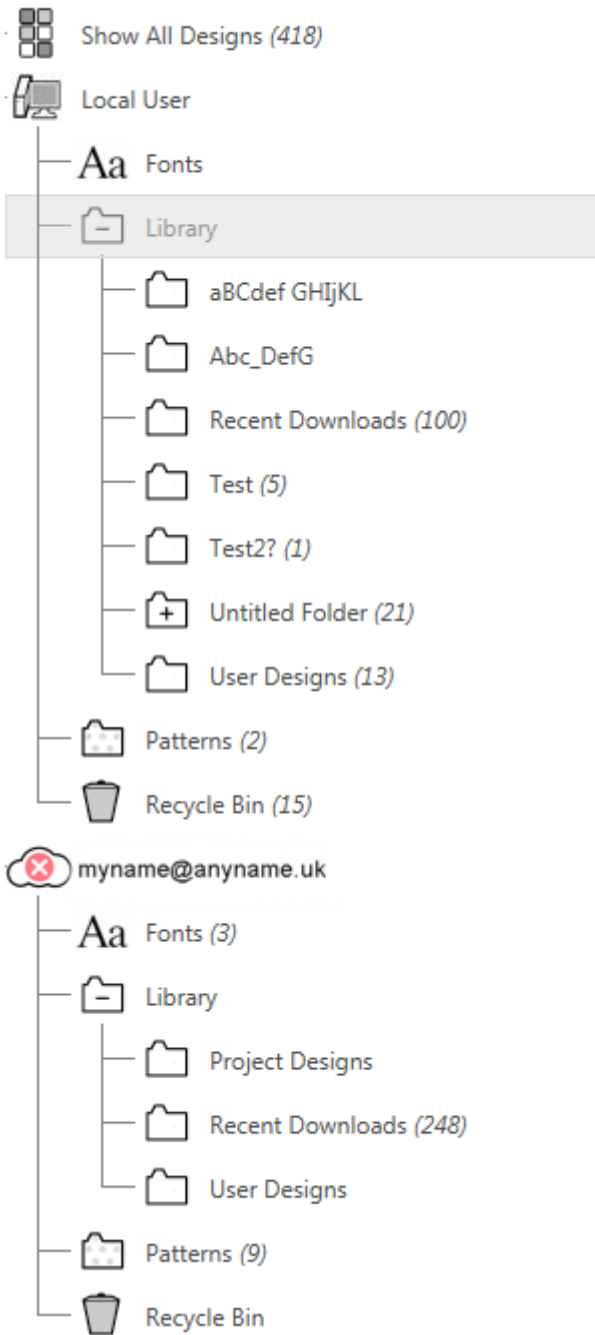
Table 1 Mapping of Silhouette Studio Library to the Extracted Destination Folder (Non Cloud Version)

Studio Library	Destination Folder
My Library	M:\SilhouetteLibrary
Show All Designs	
My Fonts	M:\SilhouetteLibrary\Non-Cloud\Fonts
My Patterns	M:\SilhouetteLibrary\Non-Cloud \Patterns
My Library	M:\SilhouetteLibrary\Non-Cloud \Library
Recent Downloads	M:\SilhouetteLibrary\Non-Cloud \Downloads
My Own Designs	M:\SilhouetteLibrary\Non-Cloud \My Designs
Test	M:\SilhouetteLibrary\Non-Cloud \Test
Test2?	M:\SilhouetteLibrary\Non-Cloud \Test2_
Untitled Folder	M:\SilhouetteLibrary\Non-Cloud \Library\Untitled Folder
00000Patterns	M:\SilhouetteLibrary\Non-Cloud \00000Patterns
Recycle Bin	M:\SilhouetteLibrary\Non-Cloud \Recycle Bin

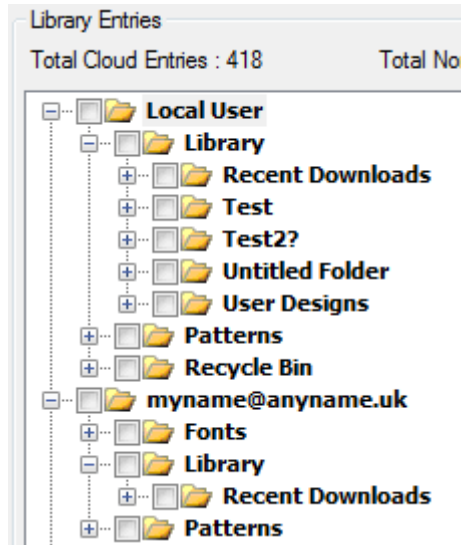
Note: - Test2? has been renamed to Test2_, since '?' is not a valid folder name.

Picture 23 My Library in Silhouette Studio (Cloud Version)

Library



Picture 24 The Library Entries Folders in Silhouette Studio Library File Extractor (Cloud Version)



The Mapping of Silhouette Studio Library to converted/extracted folders is shown in the tables below; see Table 2 Mapping of Silhouette Studio Library to the Extracted Destination Folder (Cloud Version).

Table 2 Mapping of Silhouette Studio Library to the Extracted Destination Folder (Cloud Version)

Studio Library	Destination Folder
My Library	M:\SilhouetteLibrary
Show All Designs	
Local User	
Fonts	(Empty)
Library	
ABCdef GHijkl	(Empty)
Abc_DefG	(Empty)
Recent Downloads	M:\SilhouetteLibrary\Local User\Library\Recent Downloads
Test	M:\SilhouetteLibrary\Local User\ Library\Test
Test2?	M:\SilhouetteLibrary\Local User\ Library\Test2_
Untitled Folder	M:\SilhouetteLibrary\Local User\ Library\Untitled Folder
User Designs	M:\SilhouetteLibrary\Local User\ Library\User Designs
Patterns	M:\SilhouetteLibrary\Local User\Patterns
Recycle Bin	M:\SilhouetteLibrary\Local User\Recycle Bin
myname@anyname.uk	
Fonts	M:\SilhouetteLibrary\ myname@anyname.uk \Fonts
Library	
Project Designs	(Empty)
Recent Downloads	M:\SilhouetteLibrary\ myname@anyname.uk \Library\Recent Downloads
User Designs	(Empty)
Patterns	M:\SilhouetteLibrary\ myname@anyname.uk \Library\Patterns
Recycle Bin	(Empty)

Note: - Test2? has been renamed to Test2_, since '?' is not a valid folder name.

5.3 Library Entry details

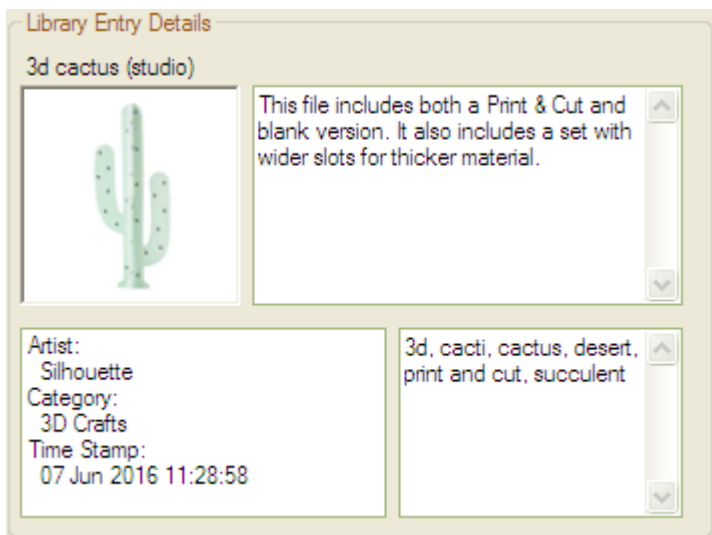
These are the library entry details that appear in the Silhouette Studio Library, when the properties of a library entry are shown.

They consist of: -

- Library entry name and file extension/type
- Thumbnail (this may not be what the drawing actually looks like)
- Description
- Artist name
- Category type
- Date and time the library entry was added to the library (not the drawing itself)
- Keywords

The Library Entry Details will be saved in a text file, e.g. 3d cactus.txt, and the thumbnail as a PNG file.

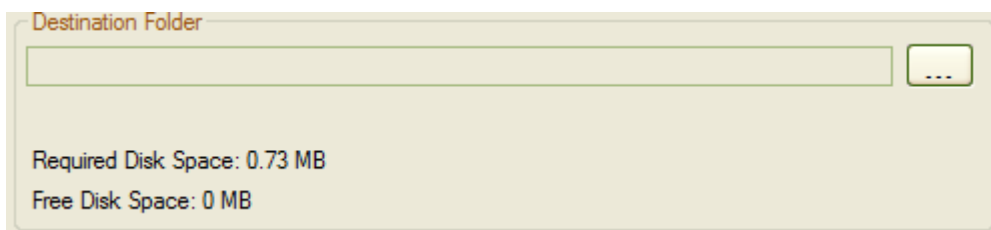
Picture 25 Library Entry Details for a Selected Entry



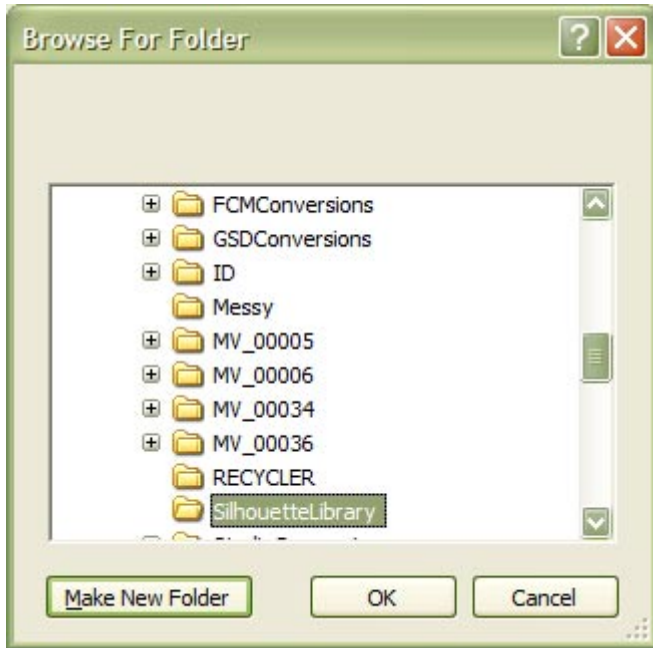
5.4 Set the Destination Folder for the Extracted Files

Click on the 'Destination' folder button, and select the drive and folder (or create a new folder) where the extracted library is to be saved.

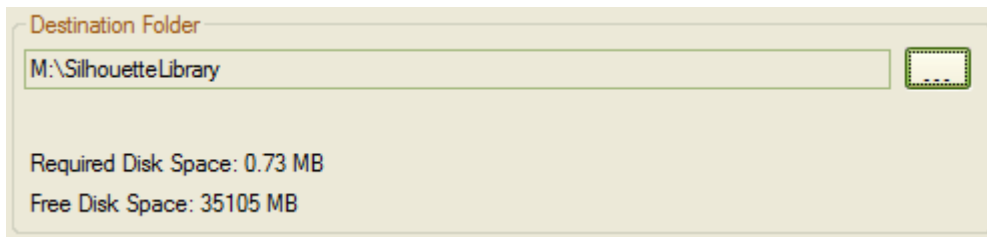
Picture 26 The Destination Folder Group Box



Picture 27 Selecting the Destination Folder

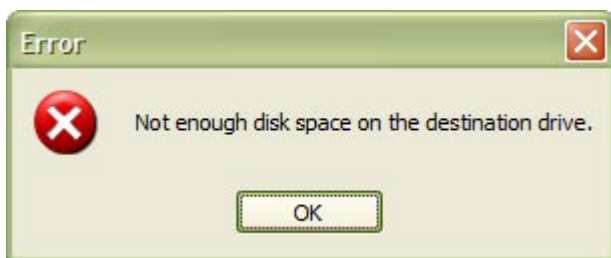


Picture 28 The Destination Folder has been selected



The destination path and the free disk space on that drive will be shown for the selected drive, the number of library files to be extracted, the required disk space (see Picture 32 Finished Extracting the Entries), or an error message if there is not enough space to extract the files (see Picture 29 Not Enough Disk Space).

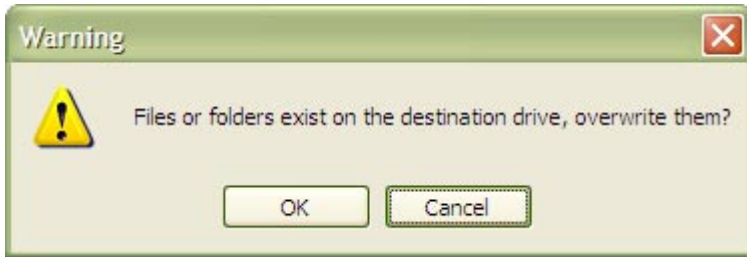
Picture 29 Not Enough Disk Space



5.5 Extracting the Files

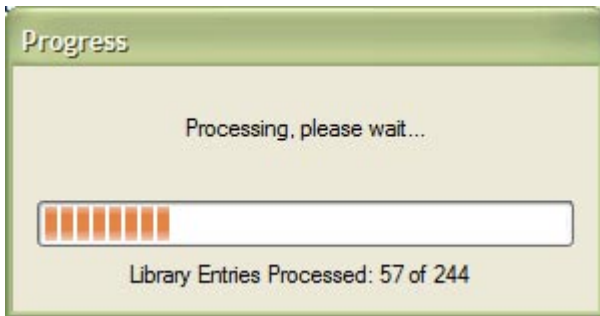
Click on the 'Extract' button to begin (it will be disabled if there are no library files, or there is no free disk space). If there are files on the destination drive/folder, a message box will appear. Click on 'OK' to continue and to overwrite them, or cancel to stop extracting.

Picture 30 Files Exist on Destination Drive/Folder



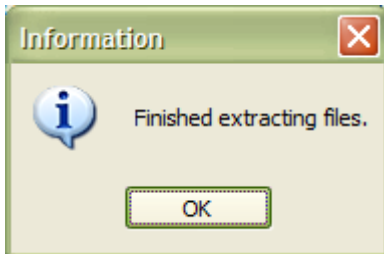
A progress bar will appear when the library entries are being extracted.

Picture 31 Progress Bar



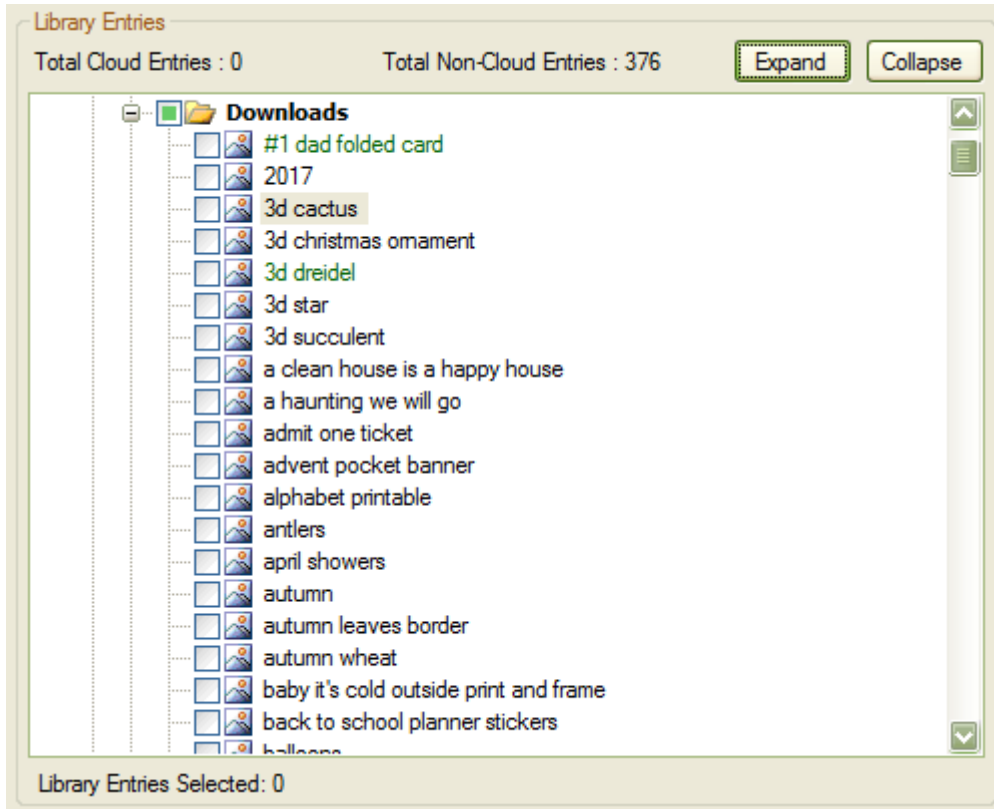
When all the library entries have been extracted, a message box will appear. Click on OK to finish. Any errors will be displayed in the errors and warning messages box (see Picture 36 The Errors and Warning Messages).

Picture 32 Finished Extracting the Entries



The extracted library entries will have the check mark removed from the library entry, and the entry name will be green (this is only temporary and will be black the next time the application is run).

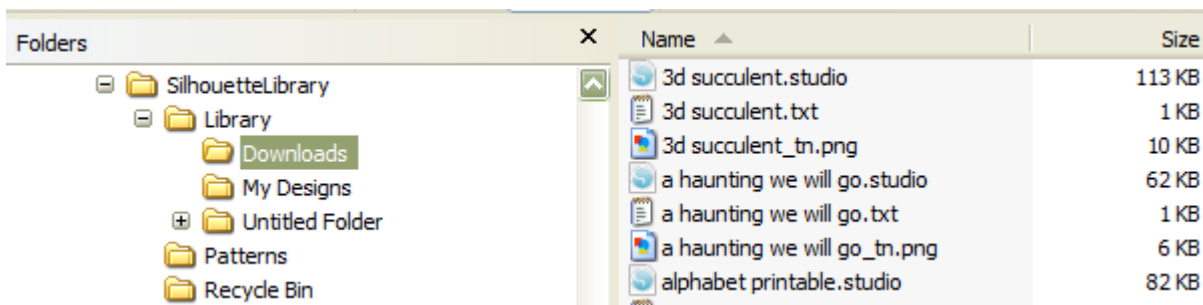
Picture 33 The Extracted Library Entries Un-checked and Entry Name in Green (Non Cloud Version)



5.6 Extracted Files Folder

This is what has been extracted from the library, GSD file, PNG thumbnail (post fixed with _tn), Studio files and the file details in text files.

Picture 34 The Extracted Files in the Destination Folder



The Silhouette Studio Library can contain entries that have the same name. The extracted files will be re-named by post fixing the file name with '(2)'. If there are three library entries called Flower, there will be re-named to:

```
Flower.studio
Flower.txt
Flower_tn.png
Flower (2).studio
Flower (2).txt
Flower_tn (2).png
Flower (3).studio
Flower (3).txt
Flower_tn (3).png
```

5.7 Other Errors

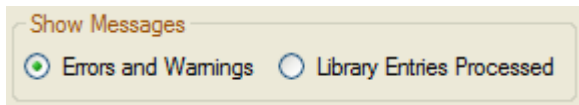
- Cannot check the destination drive for existing files.
- Cannot delete the library entries errors and warnings log file.
- Cannot delete the library entries processed log file.
- Cannot write to the library entries errors and warnings log file.
- Cannot write to the library entries processed log file.
- Error creating the destination folder.
- The file cannot be written to disk.
- The library details file cannot be written to disk.
- The preview bitmap file cannot be written to disk.

5.8 Displaying the Log Messages

The errors and warnings or library entries processed messages can be shown separately, by selecting the appropriate radio button in the ‘Show Messages’ group (see Picture 35 Selecting the Error and Warning or Library Entries Processed).

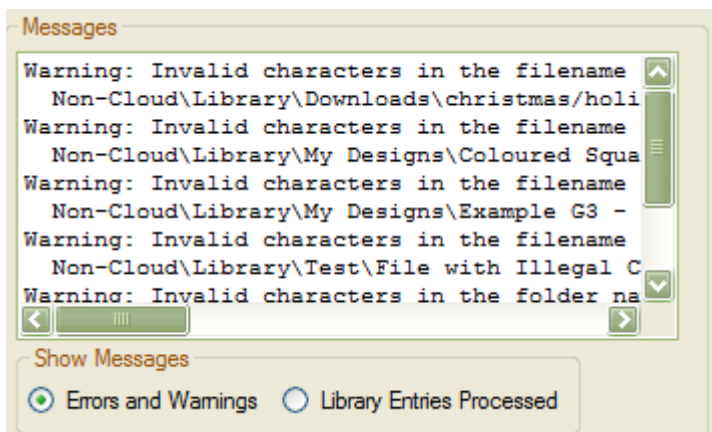
An error or warning message doesn’t usually stop the library entry from being extracted, but an error message would mean that the extraction was not completed for the library entry, and there may be missing files.

Picture 35 Selecting the Error and Warning or Library Entries Processed



Two log files containing all the error and warning or library entries processed messages during extracting are saved in the destination folder as ‘LibraryEntriesWithErrorsWarningsLog.txt’ and ‘LibraryEntriesExtractedLog.txt’.

Picture 36 The Errors and Warning Messages



There may be some files with the extension ‘.unknown’. These could not be auto detected, and may be of the supported library import types (the designer edition supports more file types).

Some of the error/warning messages that may appear after the library entries have been extracted.

Warning: Invalid characters in the filename have been replaced.
 Non-Cloud\Library\Downloads\christmas/holiday tags to Non-Cloud\Library\Downloads\christmas_holiday tags

Silhouette Studio Library File Extractor Free V1.1.15 User Guide

Warning: Invalid characters in the filename have been replaced.

Non-Cloud\Library\My Designs\Coloured Squares - !_£\$%^&*()_+ to Non-Cloud\Library\My Designs\Coloured Squares - !_£\$%^&_()_+

Warning: Invalid characters in the filename have been replaced.

Non-Cloud\Library\My Designs\Example G3 - "&*<>?/\ to Non-Cloud\Library\My Designs\Example G3 - _&_____

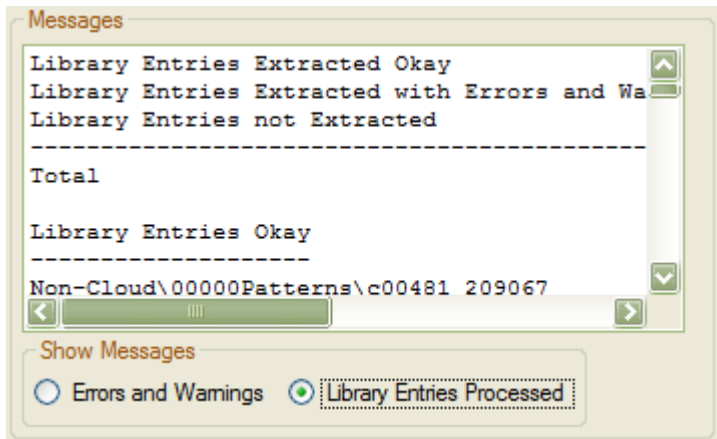
Warning: Invalid characters in the filename have been replaced.

Non-Cloud\Library\Test\File with Illegal Char '?' - Circle 40mm - Welded to Square 60mm to Non-Cloud\Library\Test\File with Illegal Char '_' - Circle 40mm - Welded to Square 60mm

Warning: Invalid characters in the folder name have been replaced.

M:\SilhouetteLibrary\Non-Cloud\Library\Test2? to M:\SilhouetteLibrary\Non-Cloud\Library\Test2_

Picture 37 The Library Entries Processed



This shows some of the Library Entries from the log file. It gives the library entries extracted and not extracted, as well as the total of each.

Note: There may be differences between the Library file count on the form, the count during extracting and the final total entries processed.

```
Library Entries Extracted Okay           371
Library Entries Extracted with Errors and Warnings  5
Library Entries not Extracted           0
-----
Total                                     376
```

Library Entries Okay

```
-----
Non-Cloud\00000Patterns\c00481_209067
Non-Cloud\00000Patterns\d53699
Non-Cloud\00000Patterns\d64528
```

.
.
.

Library Entries with Errors and Warnings

```
-----
Non-Cloud\Library\Downloads\christmas/holiday tags
Non-Cloud\Library\My Designs\Coloured Squares - !_£$%^&*()_+
Non-Cloud\Library\My Designs\Example G3 - "&*<>?/\
Non-Cloud\Library\Test\File with Illegal Char '?' - Circle 40mm - Welded to Square 60mm
Non-Cloud\Library\Test2?\s.studio 003
```

Library Entries not Extracted

6. Acknowledgments

I would like to thank the following for their assistance whilst developing this application.

6.1 Demo/Free Release Testers

Members of the Thyme Machines forum, (<http://www.thymemachines.com>): -

- Helen Rich (crafty49)
- Gary Hawkins (Dragon Lord)
- (Hazel P)
- Mary Pelling (Mary P)
- Lucy Gregg (Loopylass)
- And Others

Julie Flanagan, who has over 14,000 files in her Silhouette Studio library.

7. Appendix

7.1 Un-Installing

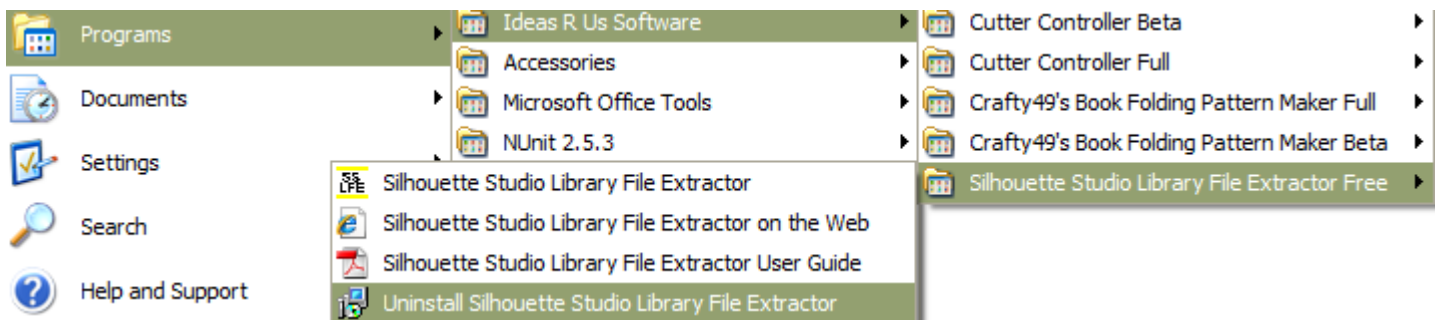
The Silhouette Studio Library File Extractor Free application can be un-installed from the Start Menu (see Picture 38 Un-installing from the Start Menu).

If there isn't a Silhouette Studio Library File Extractor Free Start Menu folder, the program can be un-installed from the Windows 'Add/Remove Programs' control panel.

It can also be un-installed from double clicking on the `unins000.exe` in the Silhouette Studio Library File Extractor Free installed folder. This is usually in the `IdeasRUsSoftware\SilhouetteStudioLibraryFileExtractorFree` folder.

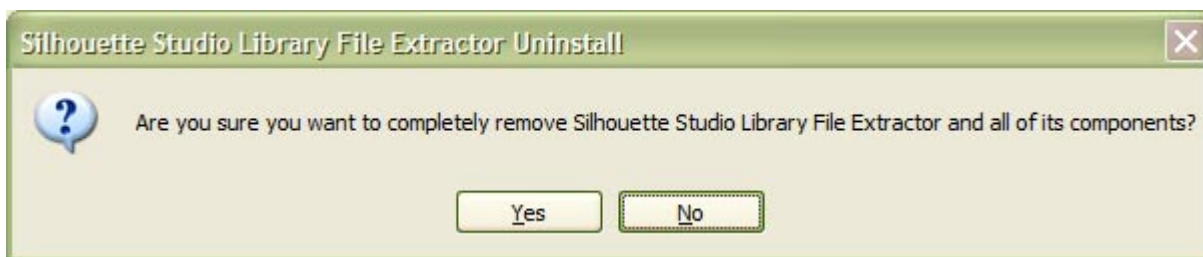
Any extracted files will not be deleted.

Picture 38 Un-installing from the Start Menu



A confirmation pop-up message box will be displayed, click 'Yes' to install, and 'No' to cancel uninstall.

Picture 39 Confirm Uninstall



The Silhouette Studio Library Converter Free application has been successfully removed.

Picture 40 Successfully Uninstalled



7.2 Keyboard Shortcuts

Exit Program	Alt + F4
Check for Updates	Ctrl + U
About	F1

7.3 Previous Release Notes

7.3.1 Changes Made in Version 1.1.00

7.3.1.1 New Features

- Added a progress bar when reading in the Library Entries.
- A tree view folder and file type interface to support both Cloud and Non Cloud libraries, instead of the single/all library folder selector.
- Added some more support for Cloud libraries (reading some of the library entry details), but the entries will not be extracted.

7.3.1.2 Issues Fixed

- Large libraries take a long time to load. Fixed.
- Some Library Entry details that had been changed where not correct. Fixed.
- HTML encoded characters in the library entry details description such as '&Amp', weren't decoded to '&'. Fixed.
- When both the scroll bars appear, the right scroll bar obscures the longest line of text. Added a line of '*' that are longer by 5 than the longest line. Fixed.
- Replacing illegal filename/path name characters showed the replaced chars and not the actual characters. Fixed.

7.3.1.3 Improved

Some of the error/warning messages have been changed.

7.3.2 Changes Made in Version 1.0.35

7.3.2.1 New Features

Versions of Silhouette Studio 3.7.026 and later have had the folder location changed to cloud52, and the library file structure changed. This has not yet been fully implemented, but any files in the 'Cloud' folder will be displayed, but cannot be extracted.

7.3.2.2 Issues Fixed

- When the number of Library Entries was large, the main form didn't appear straight away, given the impression that the program wasn't working. It now appears straight away. Fixed.
- Entries in the errors/warnings list box could be selected, but not copied. They can no longer be selected/highlighted. Fixed.

7.3.3 Changes Made in Version 1.0.31

7.3.3.1 Issues Fixed

There was an error reading in the index file on Windows 7 64-bit. Fixed.

7.3.4 Changes Made in Version 1.0.30

7.3.4.1 Issues Fixed

- The method used to read the library files was wrong. This resulted in old library files being extracted when they had been moved to another folder. The index file is now used instead, which gives an accurate count of the library entries. Fixed
- When a Silhouette Studio Library system file didn't have any entries, an error occurred. Fixed.

7.3.4.2 Improvements Made

- The required disk space label has been change from whole mega bytes to the nearest 1/100 of a mega byte.
- On the progress form, the total number of library entries is shown, e.g. 1 of 250.

7.3.5 Changes Made in Version 1.0.20

7.3.5.1 New Features

- Check for existing files on the destination drive, and to display a warning pop-up if any exist.
- A progress bar when files are being extracted.
- The design number is added the extracted library details text file. It is the same number that is used by the online Silhouette Studio store.
- The single log file is replaced with two log files. One that lists the library entries extracted, and one that lists the errors and warnings for the library entries. The form's radio buttons text has been renamed.

7.3.5.2 Issues Fixed

- The extracted GST files were renamed to GSD files, now they are not renamed. Fixed.
- Some of the library entries didn't have any drawing/image file to extract. Fixed.
- Some of the library entries don't have a bitmap preview. Fixed.
- Library entries having the same name were overwritten. Now they are renamed. Fixed.
- Library folder names may contain illegal characters when converted to system folder names, causing an error. Fixed.
- An 'Unknown' category code in the library detail may have caused an error. Fixed.
- Some library entries don't have all the library details (missing artist name, etc). A missing library entry name will use the design number instead. Fixed.
- When the library entry details are changed in Silhouette Studio, two external files are used to store these changes (changes to the library entry name are also stored in them). These changes are now read in and applied to the extracted library entry details. Fixed.

7.3.5.3 Improvements Made

- Prefixed the invalid characters warning messages with 'Warning'.
- Changed the text in the messages list box to a fixed space font.

7.3.6 Changes Made in Version 1.0.00

The version change jump is to coincide with the Free release version.

7.3.6.1 New Features

- Added a menu item for User Guide in the Help menu.
- Added a menu item for the Installation Folder in the Help menu.
- Added a 'Product Brand' icon to the .exe file and to the main form.

7.3.6.2 Updated

- Changed a link on the *Help -> About* Form to 'ideas-r-us-software.co.uk', and changed the name from 'Ideas R Us' to 'Ideas R Us Software'
- Renamed from the 'Convert' button to 'Extract'.
- Renamed various occurrences of the text 'Silhouette Studio Library Converter' to 'Silhouette Studio Library File Extractor'.

7.3.6.3 Improvements Made

- Disabled the form's maximise control button, since no form controls are re-sizable.
- The installer will open the DOT NET framework website if 3.5 isn't found.
- Checked the 'add desktop and quick start icon' check boxes in the installer.
- The group 'Show Messages' will be enabled if there are Error or Warning messages.

7.3.7 Changes Made in Version 0.5.06

7.3.7.1 New Features

- Added a Check for Updates feature to the Help menu.
- Added a File Menu and an exit application menu item.
- Added keyboard short cuts to all the menu items

7.3.7.2 Improvements Made

In the Studio Library Folder drop down box, replaced the 'blank' entry for all the folders with <All Folders>.

7.3.8 Known Issues

- This has not been tested with any Silhouette Studio Versions before 1.9.
- The library details file may not contain the updated info; since the 'patches' file isn't read in.
- The destination folder can be the same as the source folder, which shouldn't be allowed.
- Any existing files in the destination folder will be overwritten without warning.
- An unknown file format will display a warning message.
- The Silhouette library folder and file names can have characters that contain invalid characters when written to disk. They are replaced with an underscore '_', so 'MyFile:' will become 'MyFile_'.

7.3.9 Changes Made in Version 0.5.05

7.3.9.1 New Features

- It is now possible to convert/extract a library sub-folder, instead of just all the library.

7.3.10 Changes Made in Version 0.5.04

7.3.10.1 Issues Fixed

- Some files were being incorrectly saved as GSD. Added auto detect of file types to fix this.
- Any unknown file type will have the file extension '.unknown' added, and add a warning message.
- GST (GSD template files) files are now renamed to GSD, the warning message about this has been removed.
- It now correctly detects and replaces invalid characters in the folder names.